

800mA Single Cell Linear Li-Ion Battery Charger

1 Feature

- Input Withstand Voltage 36V
- Input Overvoltage Protection 6.8V
- Standby Current Less Than 1 μ A
- High-Precision Full Charge Detection Voltage Threshold
- Support 0V Battery Charging
- Up to 800mA Programmable Charge Current
- Trickle/Constant Current/Constant Voltage Three-Stage Charging
- 2.8 V Trickle Switching Threshold
- Automatic Recharging
- Battery Reverse Polarity Protection
- Adjustable Charging Current with Intelligent Thermal Regulation
- LED Status Indication Output Pin
- SOT23-5 Package
- RoHS Compliant

2 Applications

- Capacitive Sensors
- Toy
- Bluetooth Applications
- Lithium-ion Battery Powered Devices

3 Description

GD30BC1500 is a complete constant current/constant voltage linear charger for single-cell lithium batteries. Its compact package and low number of external components make GD30BC1500 very suitable for portable applications. It adopts PMOSFET architecture and anti-backflow circuit internally, so no external detection resistor and isolation diode are required. Thermal feedback can regulate the charging current to limit the chip power consumption under high power operation or high temperature environment conditions. The full charge voltage is fixed at 4.2V, and the charging current can be programmed by the ISET external resistor.

When the final full charge voltage is reached and the charge current drops to 1/10 of the set current, the GD30BC1500 will automatically terminate the charge cycle. When the input voltage source is removed, the GD30BC1500 automatically enters a low power state and the port leakage current connected to the battery drops below 1 μ A. Other features include charge current monitor, under-voltage lockout, automatic charging and status pins.

Device Information¹

PART NUMBER	PACKAGE	BODY SIZE (NOM)
GD30BC1500	SOT23-5	2.92mm x 1.62mm

1. For packaging details, see [Packaging information](#) section.

Simplified Application Schematic

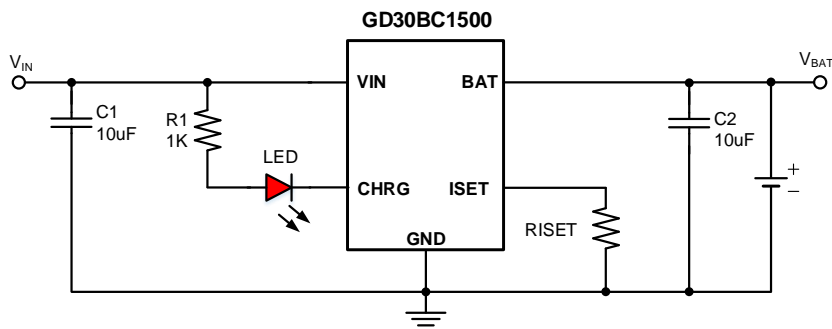
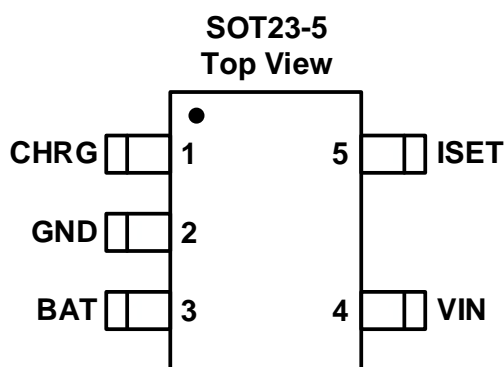


Table of Contents

1	Feature	1
2	Applications	1
3	Description.....	1
	Table of Contents	2
4	Device Overview.....	3
4.1	Pinout and Pin Assignment	3
4.2	Pin Description	3
5	Parameter Information	4
5.1	Absolute Maximum Ratings.....	4
5.2	Recommended Operating Conditions	4
5.3	Electrical Sensitivity	4
5.4	Thermal Resistance	4
5.5	Electrical characteristics.....	5
6	Functional Description	6
6.1	Block Diagram.....	6
6.2	Operation	6
7	Application Information	10
7.1	Typical Application Circuit	10
8	Layout Guidelines and Example.....	11
9	Packaging information.....	12
9.1	Outline Dimensions	12
9.2	Recommended Land Pattern	14
10	Ordering Information	15
11	Revision History	16

4 Device Overview

4.1 Pinout and Pin Assignment



4.2 Pin Description

PINS		PIN TYPE ¹	FUNCTION
NAME	NUM		
CHRG	1	O	Open-drain output for charging status indicator.
GND	2	G	Ground pin.
BAT	3	P	Charging current output pin.
VIN	4	P	Power input pin, connected to the adapter.
ISET	5	I	Charge current programming, by connecting a 1% resistor (R_{ISET}) to ground to program the charge current.

1. I input, P = power, G = ground.

5 Parameter Information

5.1 Absolute Maximum Ratings

Exceeding the operating temperature range(unless otherwise noted)¹

SYMBOL	PARAMETER	MIN	MAX	UNIT
V _{IN}	Input voltage	−0.3	36	V
V _{CHRG}	Status indication pin withstand voltage	−0.3	36	V
V _{BAT}	Battery voltage	−5	12	V
V _{ISET}	ISET pin withstand voltage	−0.3	6	V
T _J	Junction temperature	−40	150	°C
T _{stg}	Storage temperature range	−55	150	°C

1. Stresses exceeding these ratings may cause permanent damage. Exposure to absolute maximum conditions for extended periods may degrade device reliability. These are stress ratings only and functional operation of the device at these or any other conditions beyond those specified is not implied.

5.2 Recommended Operating Conditions

SYMBOL	PARAMETER	MIN	TYP	MAX	UNIT
V _{IN}	Input voltage range	4.5	5	6	V
I _{CH}	Constant current charging current			0.8	A
T _J	Operating junction temperature ¹	−40		125	°C
T _A	Working environment temperature ¹	−40		85	°C

1. Power consumption and thermal limitations must be considered.

5.3 Electrical Sensitivity

SYMBOL	CONDITIONS	VALUE	UNIT
V _{ESD(HBM)}	Human-body model (HBM), ANSI/ESDA/JEDEC JS-001-2017 ¹	±2000	V
V _{ESD(CDM)}	Charge-device model (CDM), ANSI/ESDA/JEDEC JS-002-2022 ²	±200	V

1. JEDEC document JEP155 states that 500-V HBM allows safe manufacturing with a standard ESD control process.
2. JEDEC document JEP157 states that 250-V CDM allows safe manufacturing with a standard ESD control process.

5.4 Thermal Resistance

SYMBOL ¹	CONDITIONS	PACKAGE	VALUE	UNIT
Θ _{JA}	Natural convection, 2S2P PCB	SOT23-5	210	°C/W

1. Thermal characteristics are based on simulation, and meet JEDEC document JESD51-7.

5.5 Electrical characteristics

$V_{IN} = 5V$, $C_1 = 10\mu F$, $C_2 = 10\mu F$, $T_A = 25^\circ C$, unless otherwise specified.

SYMBOL	PARAMETER	CONDITIONS	MIN	TYP	MAX	UNIT
POWER SUPPLY						
V_{IN}	Input voltage range		4.5	5	6	V
$I_{IN} - I_{BAT}$	Input power current	Charging Mode ($R_{ISET} = 2K$)		240	360	μA
V_{OVP}	Input overvoltage protection	V_{IN} rises	6.3	6.8	7.3	V
V_{OVP_HYS}	Input overvoltage protection hysteresis			500		mV
V_{UVLO}	VIN undervoltage lockout threshold	V_{IN} drops		3.8		V
V_{UVLO_HYS}	VIN undervoltage lockout threshold hysteresis			200		mV
BATTERY CHARGING						
V_{FLOAT}	Stable output (full charge voltage)	V_{BAT} from low to high	4.158	4.2	4.242	V
ΔV_{RCHG}	Recharge hysteresis voltage	$V_{FLOAT} - V_{RCHG}$		150		mV
R_{DS_ON}	Power tube conduction internal resistance	$V_{BAT} = 3.8V$, $R_{ISET} = 2k\Omega$		700		m Ω
I_{CH}	Constant current charging current	$V_{IN} = 5V$, $V_{BAT} = 3.6V$, $R_{ISET} = 1.3k\Omega$		770		mA
I_{BAT}	BAT pin current	V_{IN} is left floating, $V_{BAT} = 4.0V$		0.5	1	μA
V_{TRIKL}	Trickle charge threshold voltage	V_{BAT} rises		2.8		V
V_{TRIKL_HYS}	Trickle charge threshold voltage hysteresis			150		mV
I_{TRIKL}	Trickle charge current	$V_{BAT} < V_{TRIKL}$		10%* I_{CH}		mA
I_{EOC}	Termination charge current threshold			10%* I_{CH}		mA
V_{ISET}	ISET pin voltage during constant current charging	$V_{IN} = 5V$, $R_{ISET} = 2K$	0.85	1	1.15	V
I_{ISET}	ISET pin current			1		μA
LED INDICATION						
I_{sink}	CHRG pin pull-down current	$V_{IN} = 5V$, $V_{CHRG} = 1V$	1	2.5	5	μA
INTERNAL TEMPERATURE COMPENSATION						
T_{OTC}	Internal temperature compensation			130		$^\circ C$

6 Functional Description

6.1 Block Diagram

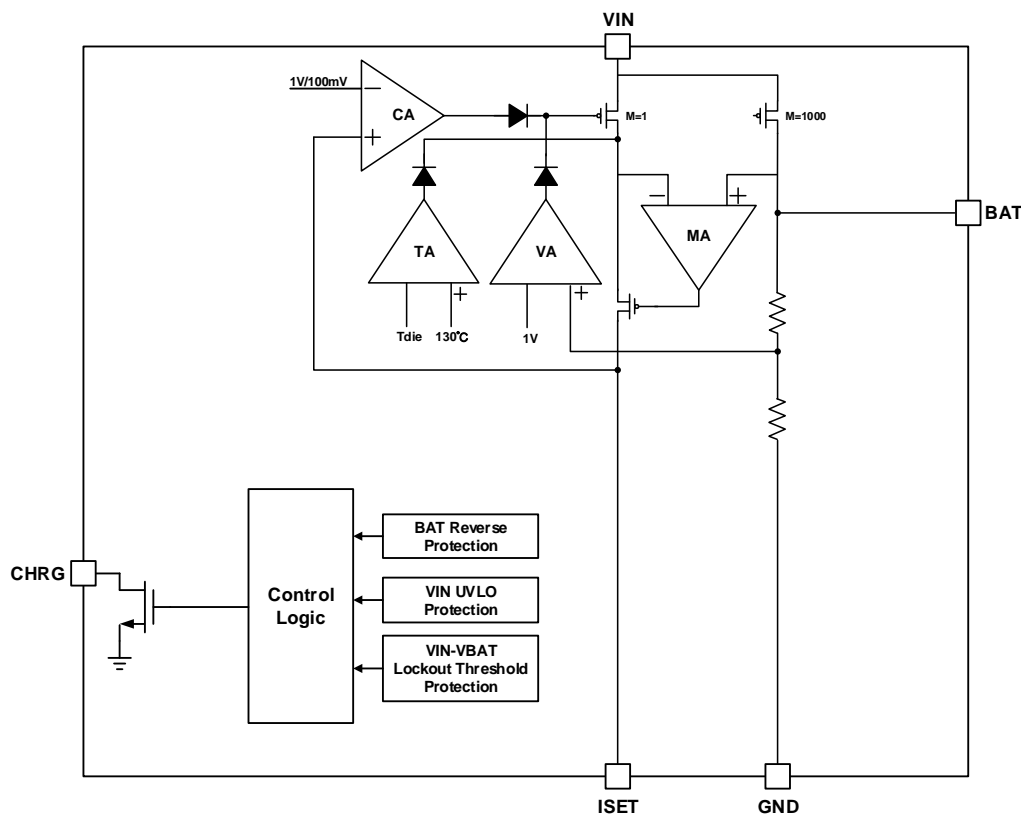


Figure 1. GD30BC1500 Functional Block Diagram

6.2 Operation

The GD30BC1500 is a complete constant current/constant voltage linear charger for single-cell lithium batteries. Its compact package and low external component count make the GD30BC1500 ideal for portable applications. The thermal feedback can adjust the charging current to limit the power consumption of the chip under high-power operation or high-temperature environment conditions. The complete charging process includes trickle pre-charging, constant current charging, constant voltage charging and automatic recharging, as shown in Figure 2. The full charge voltage is fixed at 4.2V, and the constant current charging current can be programmed through the ISET external resistor. When the final full charge voltage is reached, the charging current drops to 1/10. When the constant current is used, the GD30BC1500 will automatically terminate the charge cycle. When the input voltage source is removed, the GD30BC1500 automatically enters a low power state, and the leakage current of the port connected to the battery drops below 1μA. Other features include charge current monitor, undervoltage lockout, automatic charging and status pins.

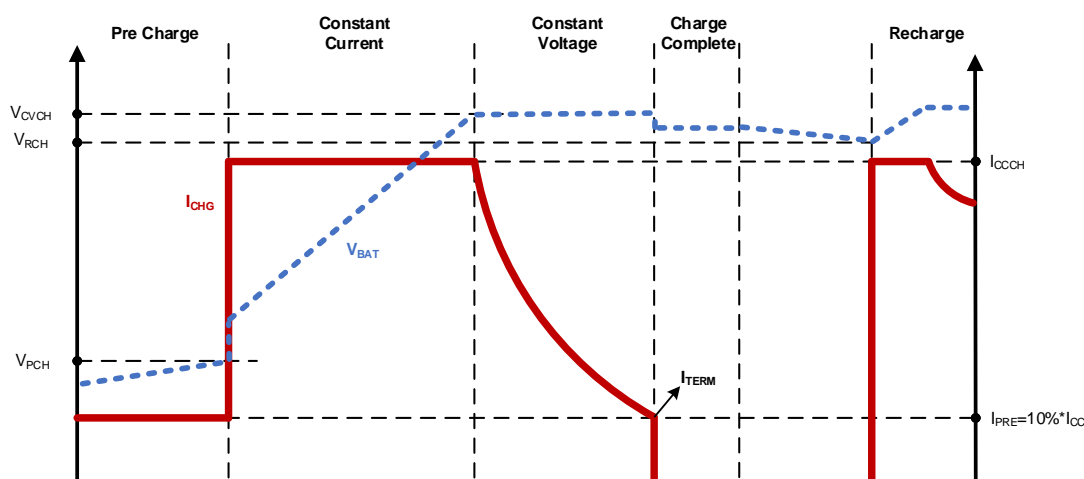


Figure 2. Lithium Battery Cycle Charging Process

6.2.1 Charging

When the input voltage is below 3.8V or above 6.8V, the charger IC will automatically disable. When a battery is connected to the charger output and the voltage at the VIN pin rises above 4.5V, a charging cycle begins. If the BAT pin voltage is below 2.8V, the charger enters trickle charge mode. In this mode, the GD30BC1500 provides approximately 1/10 of the ISET programmed charging current to bring the battery voltage to a safe level for full current charging. When the BAT pin voltage rises above 2.8V, the charger enters constant current mode (CC), and the ISET programmed charging current is supplied to the battery. When the BAT pin voltage approaches the final full charge voltage, the GD30BC1500 enters constant voltage mode (CV), and the charging current gradually decreases. When the charging current in CV mode decreases to 1/10 of the programmed current, the battery is fully charged. The status is indicated.

6.2.2 Charge Termination

The charging cycle is terminated when the charging current drops to 1/10 of the set value after reaching the final full charge voltage.

6.2.3 ISET Programmable Charge Current

Set by a resistor connected between the ISET pin and ground. The set resistor and charge current are calculated using the following Equation(1), where R_{ISET} is in ohms (Ω).

$$I_{BAT} = \frac{1000}{R_{ISET}} \quad (1)$$

In order to ensure the stability and temperature characteristics of the system, it is recommended to use a metal film resistor with an accuracy of 1% for R_{ISET}. In specific applications, the charging current can be reasonably set according to the actual system requirements and ambient temperature. The relationship between R_{ISET} and the charging current is as follows:

R _{ISET} (KΩ)	I _{CH} (mA)
1.3	770
2	500

R_{SET} (K Ω)	I_{CH} (mA)
5	2 00
10	1 00

6.2.4 Automatic Recharging

Once the charge cycle is terminated, the GD30BC1500 continuously monitors the voltage on the BAT pin using a comparator with a 1.8 ms filter time . When the battery voltage drops below 4.05V (roughly corresponding to 80% to 90% of the battery capacity), the charge cycle restarts. This ensures that the battery is maintained at (or close to) a fully charged state and eliminates the need for periodic charge cycle initiations.

6.2.5 Undervoltage Lockout

The built-in undervoltage lockout circuit monitors the input voltage and keeps the charger in shutdown mode until VIN rises above the undervoltage lockout threshold. The UVLO circuit will keep the charger in shutdown mode. If the UVLO comparator is tripped, the charger will not exit shutdown mode until VIN rises 200mV above the battery voltage .

6.2.6 Reverse Battery Protection

GD30BC1500 integrates a reverse battery protection circuit, which can effectively prevent chip damage caused by reverse battery connection during assembly or application. When the BAT pin voltage is 200mV lower than the GND voltage, the internal charging circuit is closed. when the BAT pin voltage rises back to 10mV lower than the GND voltage, it is judged that the battery is connected normally, and the charging cycle is restarted.

6.2.7 LED Status Indicator

There are two different charging states, one is charging and the other is charging completed. The CHRG pin is pulled low in the charging state and becomes high impedance in the charging completed state.

CHARGING STATUS	RED LED (CHRG)
Charge	Bright
Fully charged	Destroy
Undervoltage lockout, overvoltage, abnormal battery temperature	Destroy
VIN connected, battery not connected	Bright

6.2.8 Intelligent Temperature Control

If the chip temperature rises above a preset value of 130°C, an internal thermal feedback loop will reduce the charge current. This feature prevents the GD30BC1500 from overheating and allows the user to increase the upper limit of a given board's power handling capability without the risk of damaging the GD30BC1500. The charge current can be set based on typical (rather than worst-case) ambient temperature, with the assurance that the charger will automatically reduce the current in the worst case.

6.2.9 Power Dissipation

The chip junction temperature depends on many factors such as ambient temperature, PCB layout, load and package

type. The power consumption and chip junction temperature can be calculated according to the following [Equation\(2\)](#):

$$P_D = R_{DS(ON)} \times I_{OUT}^2 \quad (2)$$

According to the PD junction temperature, it can be calculated by the following [Equation\(3\)](#):

$$T_J = P_D \times \theta_{JA} + T_A \quad (3)$$

Where:

T_J is the chip junction temperature, T_A is the ambient temperature, θ_{JA} is the package thermal resistance.

7 Application Information

GD30BC1500 is a linear charger for single-cell lithium-ion batteries. It has a 36V input voltage, a 5V typical input voltage, and a lithium-ion battery full charge voltage of 4.2V.

7.1 Typical Application Circuit

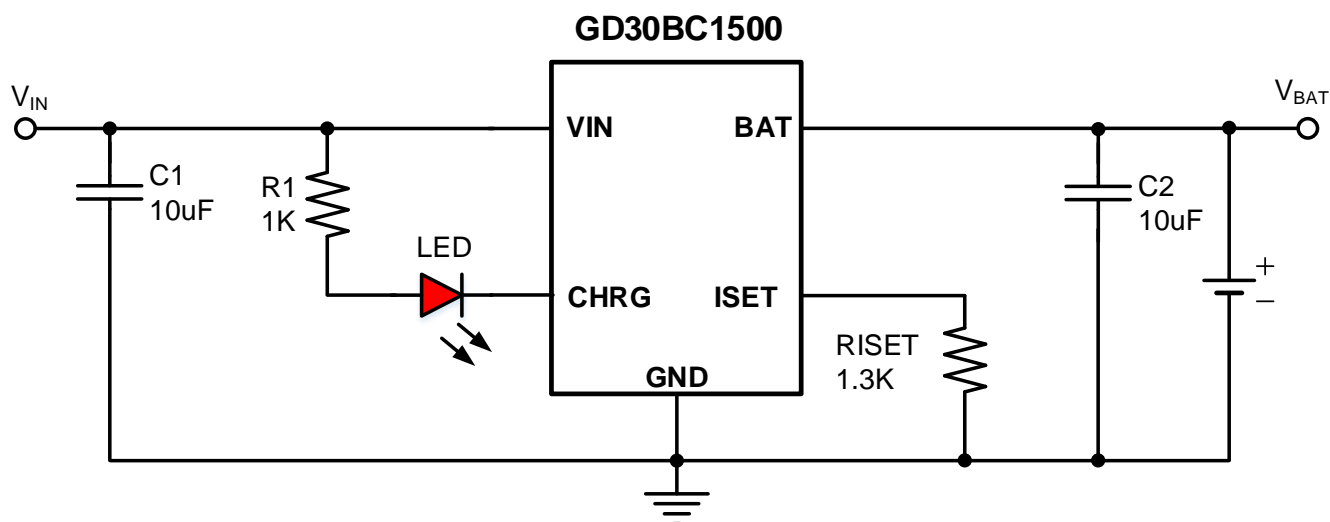


Figure 3. 500mA Constant Current Charging Reference Circuit

8 Layout Guidelines and Example

For the best finishing performance, place all circuit components on the same layer of the circuit board and as close to the chip pins as possible. The input and output capacitor return paths and the chip GND pins are connected to the same ground plane, which needs to be widened, and the input and output capacitors are placed as close to the chip pins as possible. It is not recommended to use vias and long traces for input and output capacitors, which will have a negative impact on system performance. The grounding scheme shown in [Figure 4](#) minimizes parasitic inductance, thereby reducing load current transients, minimizing noise, and improving circuit stability.

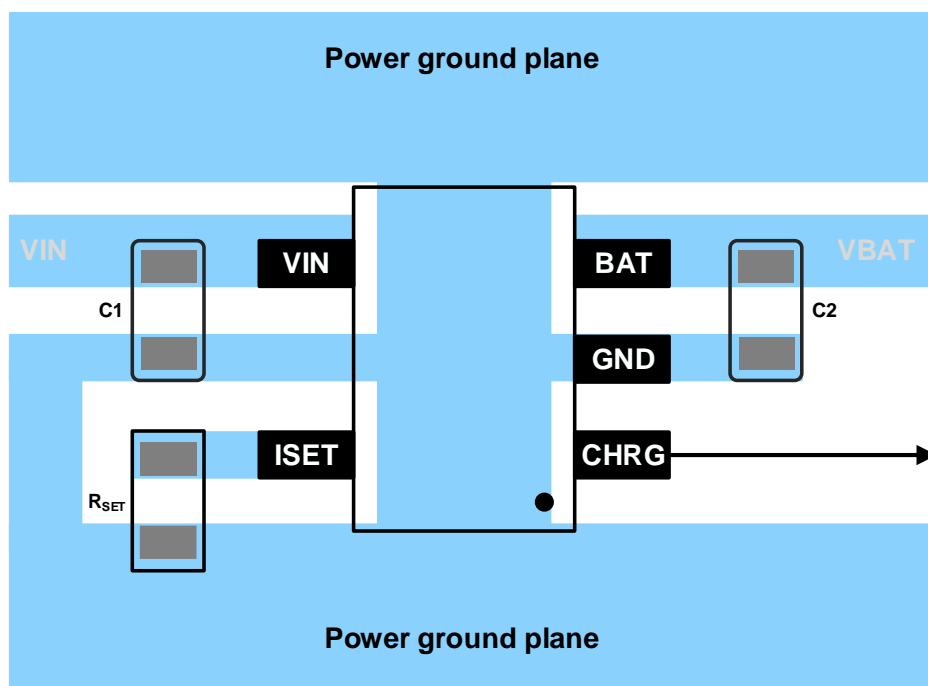
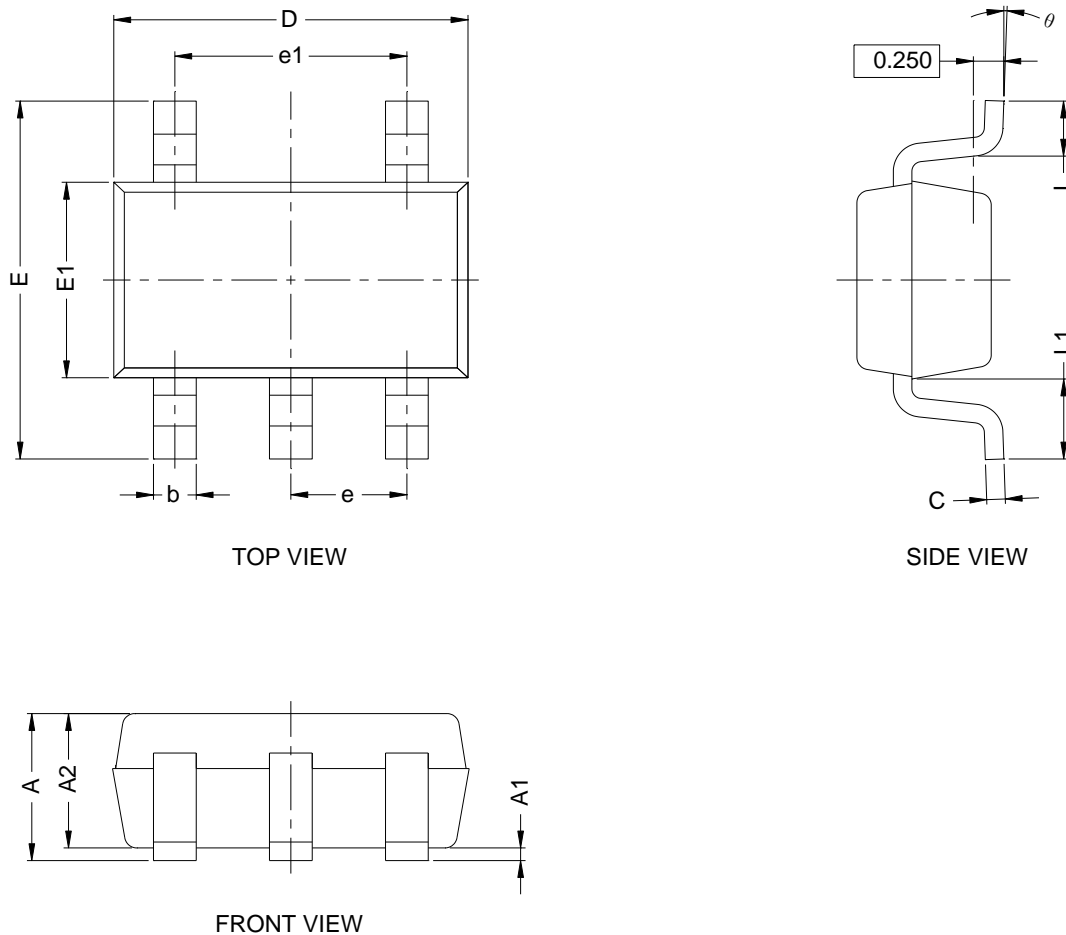


Figure 4. Typical GD30DC1500 Example Layout

9 Packaging information

9.1 Outline Dimensions

SOT23-5 package diagram



Note :

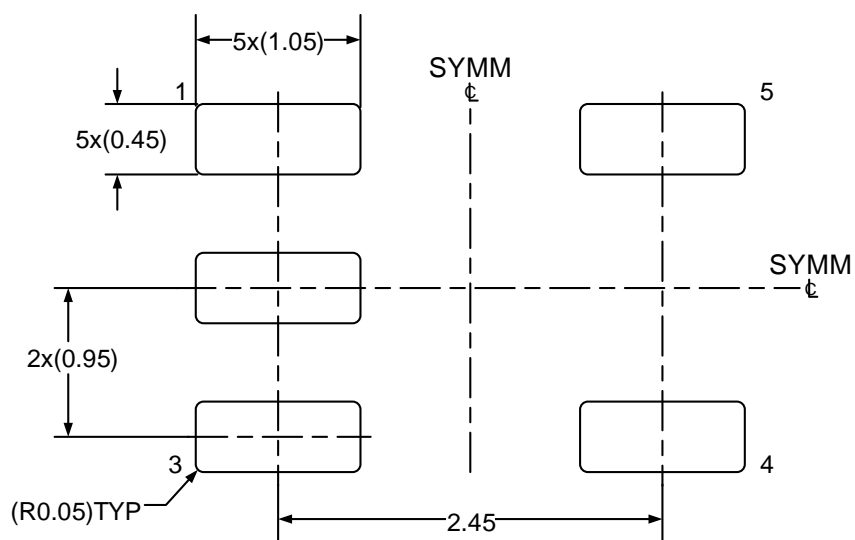
1. All dimensions are in millimeters.
2. Package dimensions does not include mold flash, protrusions, or gate burrs.
3. Refer to [Table 1. SOT23-5 dimensions\(mm\)](#).

Table 1. SOT23-5 dimensions(mm)

SYMBOL	MIN	NOM	MAX
A			1.25
A1	0.03	0.08	0.15
A2	1.05	1.10	1.15
b	0.27		0.35
c	0.135		0.23
D	2.82	2.92	3.02
E	2.60	2.90	3.00
E1	1.50	1.62	1.70
e	0.95 BSC		
e1	1.90 BSC		
L	0.35	0.45	0.55
L1	0.49	0.64	0.79
θ	0°		8°

9.2 Recommended Land Pattern

SOT23-5 Land Pattern Example



Note :

1. Refer to the IPC-7351 can also help you complete the designs.
2. Exposed metal shown.
3. Drawing is 20X scale.

10 Ordering Information

Ordering Code	Package Type	ECO Plan	Packing Type	MOQ	OP Temp(°C)
GD30BC1500NSTR-I	SOT23-5	Green	Tape & Reel	3000	−40°C to +125°C

11 Revision History

REVISION NUMBER	DESCRIPTION	DATE
1.0	Initial release and device details	2023

Important Notice

This document is the property of GigaDevice Semiconductor Inc. and its subsidiaries (the "Company"). This document, including any product of the Company described in this document (the "Product"), is owned by the Company according to the laws of the People's Republic of China and other applicable laws. The Company reserves all rights under such laws and no Intellectual Property Rights are transferred (either wholly or partially) or licensed by the Company (either expressly or impliedly) herein. The names and brands of third party referred thereto (if any) are the property of their respective owner and referred to for identification purposes only.

The Company makes no representations or warranties of any kind, express or implied, with regard to the merchantability and the fitness for a particular purpose of the Product, nor does the Company assume any liability arising out of the application or use of any Product described in this document. Any information provided in this document is provided only for reference purposes. It is the sole responsibility of the user of this document to determine whether the Product is suitable and fit for its applications and products planned, and properly design, program, and test the functionality and safety of its applications and products planned using the Product. Unless otherwise expressly specified in the datasheet of the Product, the Product is designed, developed, and/or manufactured for ordinary business, industrial, personal, and/or household applications only, and the Product is not designed or intended for use in (i) safety critical applications such as weapons systems, nuclear facilities, atomic energy controller, combustion controller, aeronautic or aerospace applications, traffic signal instruments, pollution control or hazardous substance management; (ii) life-support systems, other medical equipment or systems (including life support equipment and surgical implants); (iii) automotive applications or environments, including but not limited to applications for active and passive safety of automobiles (regardless of front market or aftermarket), for example, EPS, braking, ADAS (camera/fusion), EMS, TCU, BMS, BSG, TPMS, Airbag, Suspension, DMS, ICMS, Domain, ESC, DCDC, e-clutch, advanced-lighting, etc.. Automobile herein means a vehicle propelled by a self-contained motor, engine or the like, such as, without limitation, cars, trucks, motorcycles, electric cars, and other transportation devices; and/or (iv) other uses where the failure of the device or the Product can reasonably be expected to result in personal injury, death, or severe property or environmental damage (collectively "Unintended Uses"). Customers shall take any and all actions to ensure the Product meets the applicable laws and regulations. The Company is not liable for, in whole or in part, and customers shall hereby release the Company as well as its suppliers and/or distributors from, any claim, damage, or other liability arising from or related to all Unintended Uses of the Product. Customers shall indemnify and hold the Company, and its officers, employees, subsidiaries, affiliates as well as its suppliers and/or distributors harmless from and against all claims, costs, damages, and other liabilities, including claims for personal injury or death, arising from or related to any Unintended Uses of the Product.

Information in this document is provided solely in connection with the Product. The Company reserves the right to make changes, corrections, modifications or improvements to this document and the Product described herein at any time without notice. The Company shall have no responsibility whatsoever for conflicts or incompatibilities arising from future changes to them. Information in this document supersedes and replaces information previously supplied in any prior versions of this document.

© 2023 GigaDevice – All rights reserved