

Low Voltage Analog Temperature Sensors

1 Features

- Scale factor: 10 mV/°C
- Operation range: -40°C to +125°C, up to +150°C
- Temperature accuracy: ±2°C (typical)
- Temperature linearity: ±0.5°C (typical)
- Package:
 - 5-Pin SOT23 (1.60mm × 2.92mm)
 - 2-Pin SOT23 (1.30mm × 2.90mm)
 - 8-Pin SOIC (4.90 mm × 3.90 mm)
 - 3-Pin SOT23 (4.60mm × 4.60mm)
- Supply voltage range: 2.7V to 5.5V
- Low quiescent current:
 - Normal operation: ≤50μA
 - Shutdown mode: ≤0.5μA
- Stable with large capacitive loads
- Digital output: analog

2 Applications

- Power system monitors
- Temperature control

3 Description

The GD30TS036N is a low voltage, precision centigrade temperature sensors, which provides an analog voltage output that is linearly proportional to the Celsius (Centigrade) temperature. Every GD30TS036N chip is factory calibrated, so no external calibration is required, and the typical accuracy is ±1°C at +25°C and ±2°C over the -40°C to +125°C temperature range.

The low output impedance of the GD30TS036N and its linear output and precise calibration simplify interfacing to temperature control circuitry and ADC. The sensing devices can be powered from a single-supply of 2.7V to 5.5V. The supply current is less than 50μA, providing very low self-heating effect, less than 0.1°C in still air. In addition, a shutdown function is provided to reduce supply current to less than 0.5μA.

The GD30TS036N is specified from -40°C to +125°C, provides a 750mV output at 25°C, and operates up to 125°C from a single 2.7V supply. The output scale factor of the GD30TS036N is 10 mV/°C.

The GD30TS036N is available in low-cost 3/5-lead SOT-23 surface-mount, 3-lead TO-92 and 8-lead SOIC packages.

Device Information¹

PART NUMBER	PACKAGE	BODY SIZE (NOM)
GD30TS036N	SOT23-5	1.60mm × 2.92mm
	SOT23-3	1.30mm × 2.90mm
	SOIC-8	4.90mm × 3.90mm
	TO-92	4.60mm × 4.60mm

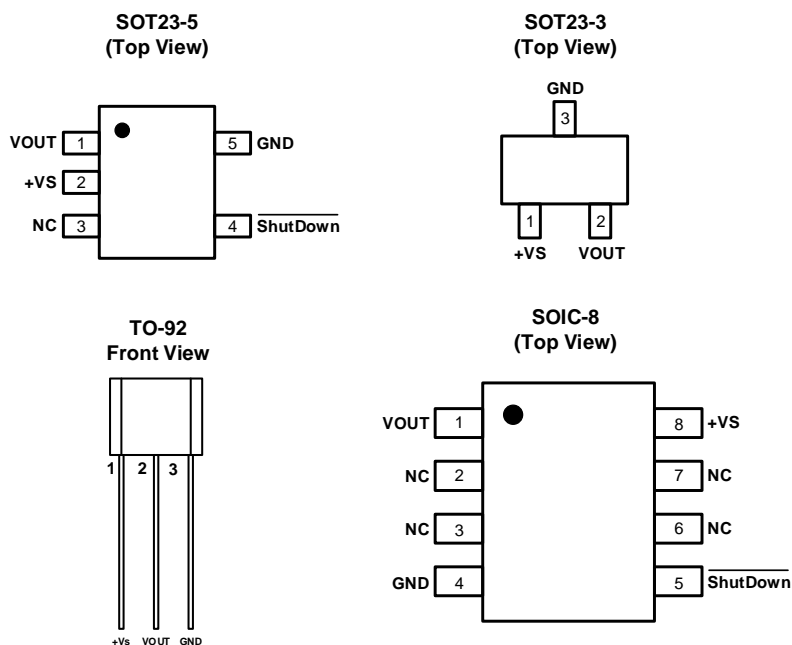
1. For packaging details, see [Package Information](#) section.

Table of Contents

1	Features	1
2	Applications	1
3	Description.....	1
	Table of Contents	2
4	Device Overview.....	3
4.1	Pinout and Pin Assignment	3
4.2	Pin Description	3
5	Parameter Information	4
5.1	Absolute Maximum Ratings.....	4
5.2	Recommended Operation Conditions	4
5.3	Electrical Sensitivity	4
5.4	Electrical Characteristics	5
5.5	Typical Characteristics	6
6	Application Information	7
7	Package Information	8
7.1	Outline Dimensions	8
8	Ordering Information	16
9	Revision History	17

4 Device Overview

4.1 Pinout and Pin Assignment



4.2 Pin Description

NAME	PINS				PIN TYPE ¹	FUNCTION
	SOT23-5	SOT23-3	TO92	SOIC8		
VOUT	1	2	2	1	O	Analog voltage output.
+VS	2	1	1	8	P	Device supply pin.
ShutDown	4			5	I	Device enable pin.
GND	5	3	3	4	G	Ground.
NC	3			2,3,6,7		

1. P = power, G = Ground, I = input, O = Output.

5 Parameter Information

5.1 Absolute Maximum Ratings

Exceeding the operating temperature range (unless otherwise noted)¹

SYMBOL	PARAMETER	MIN	MAX	UNIT
V_s	Power supply		6	V
V_{SD}	Shutdown pin	GND	$+V_s$	V
V_{ALERT}	Voltage at ALERT	-0.5	$((V_s)+0.3)$ and ≤ 5.5	V
T_A	Operating temperature	-40	150	°C
T_J	Junction temperature		160	°C
T_{stg}	Storage temperature	-60	160	°C

1. Over operating free-air temperature range (unless otherwise noted). Stresses beyond those listed under Absolute Maximum Ratings may cause permanent damage to the device.

5.2 Recommended Operation Conditions

SYMBOL ¹	PARAMETER	MIN	TYP	MAX	UNIT
V_+	Supply voltage	2.7	3.3	5.5	V
T_A	Operating Temperature	-40		125	°C

1. Unless otherwise stated, over operating free-air temperature range.

5.3 Electrical Sensitivity

SYMBOL ¹	CONDITIONS	VALUE	UNIT
$V_{ESD(HBM)}$	Human Body Mode (HBM), per ANSI/ESDA/JEDEC JS-001	± 2000	V
$V_{ESD(MM)}$	Machine Mode (MM), per JEDEC-STD Classification	200	V

1. Unless otherwise stated, over operating free-air temperature range.

5.4 Electrical Characteristics

Electrical characteristics of devices at $T_A = +25^{\circ}\text{C}$ and $V_+ = 2.7\text{V}$ to 5.5V , unless otherwise noted. (Typically, $T_A = 25^{\circ}\text{C}$, $V_+ = 3.3\text{V}$)

SYMBOL	PARAMETER	CONDITIONS	MIN	TYP	MAX	UNIT
V_+	Supply voltage range		2.7	3.3	5.5	V
I_{IN}	Supply current	Normal operation			40	μA
		Shutdown mode			0.5	μA
T_A	Temperature range		-40		125	$^{\circ}\text{C}$
T_{ACC}	Accuracy (Temperature error)	$+25^{\circ}\text{C}$, $+V_S = 3.3\text{V}$		± 1	± 2	$^{\circ}\text{C}$
		0°C to $+70^{\circ}\text{C}$, $+V_S = 3.3\text{V}$		± 1	± 3	$^{\circ}\text{C}$
		-40°C to $+125^{\circ}\text{C}$		± 2	± 3	$^{\circ}\text{C}$
	Supply voltage sensitivity	$T_A = 25^{\circ}\text{C}$, $3.0\text{V} < V_S < 5.5\text{V}$		20	100	$\text{m}^{\circ}\text{C}/\text{V}$
	Scale factor	$-40^{\circ}\text{C} \leq T_A \leq +125^{\circ}\text{C}$		10		$\text{mV}/^{\circ}\text{C}$
	Load Regulation	$-40^{\circ}\text{C} \leq T_A \leq +105^{\circ}\text{C}$		14	100	$\text{m}^{\circ}\text{C}/\mu\text{A}$
		$105^{\circ}\text{C} \leq T_A \leq +125^{\circ}\text{C}$		140	250	$\text{m}^{\circ}\text{C}/\mu\text{A}$
	Linearity			0.5		$^{\circ}\text{C}$
	Long-term stability			0.4		$^{\circ}\text{C}$
V_{OUT}	GD30TS036N output voltage	$T_A = +25^{\circ}\text{C}$		750		mV
I_{OUT}	Output load current		0		50	μA
I_{SCP}	Short-circuit current				550	μA
C_L	Capacitive load driving		1000	10000		pF
t_{ON}	Device turn-on time	Output within $\pm 1^{\circ}\text{C}$, $100\text{ k}\Omega \parallel 100\text{ pF}$ load		0.5	1	ms

5.5 Typical Characteristics

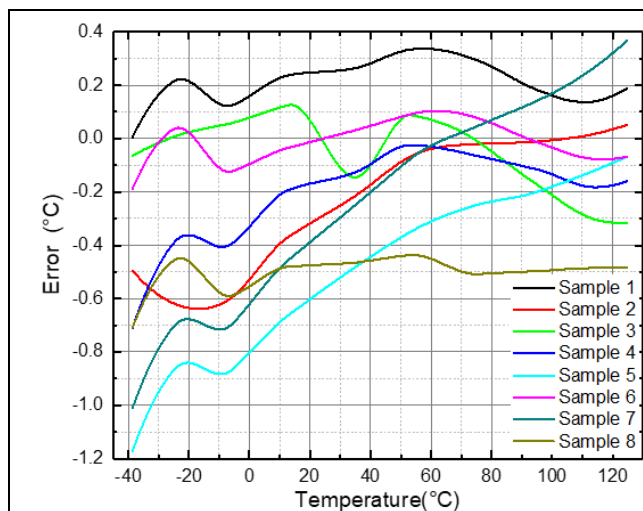


Figure 1. Temperature Error

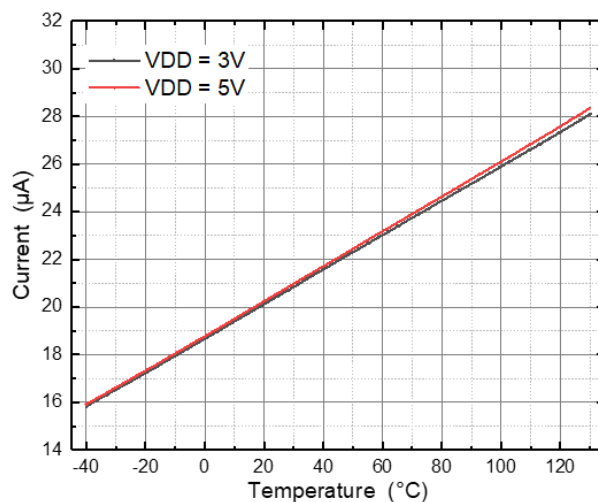


Figure 2. Supply Current versus Temperature

Table 1. Output Voltage versus Temperature

TEMPERATURE (°C)	V _{OUT} (mV)	TEMPERATURE (°C)	V _{OUT} (mV)
-40	100	50	1000
-30	200	60	1100
-20	300	70	1200
-10	400	80	1300
0	500	90	1400
10	600	100	1500
20	700	110	1600
30	800	120	1700
40	900	125	1750

6 Application Information

Figure 3 shows the basic temperature sensor connections for the GD30TS036N temperature sensor. Section 4.2 shows the corresponding pin descriptions for the three package types of temperature sensors. For the SOT23-5, Pin 3 is labeled as “NC” as are Pins 2, 3, 6, and 7 on the SOIC-8 package. It is recommended that no electrical connections be made to these pins. If the shutdown feature is not needed on the SOT23-5 or the SOIC-8 package, the ShutDown pin should be connected to +V_S. Note the 0.1μF bypass capacitor on the input side of the power supply. This capacitor should be a ceramic type, and be located as close a physical proximity to the temperature sensor supply pin as practical to reach better filter effect. Minimizing the radio frequency interference (RFI) is especially important for these devices because the temperature sensor operates at very low current and can be exposed to extremely hostile electrical environments. When the sensor operates in an environment with high frequency radiation or high conducted noise, connecting a 0.1μF ceramic capacitor in parallel with a large value tantalum capacitor (2.2μF) can provide better noise reduction capability.

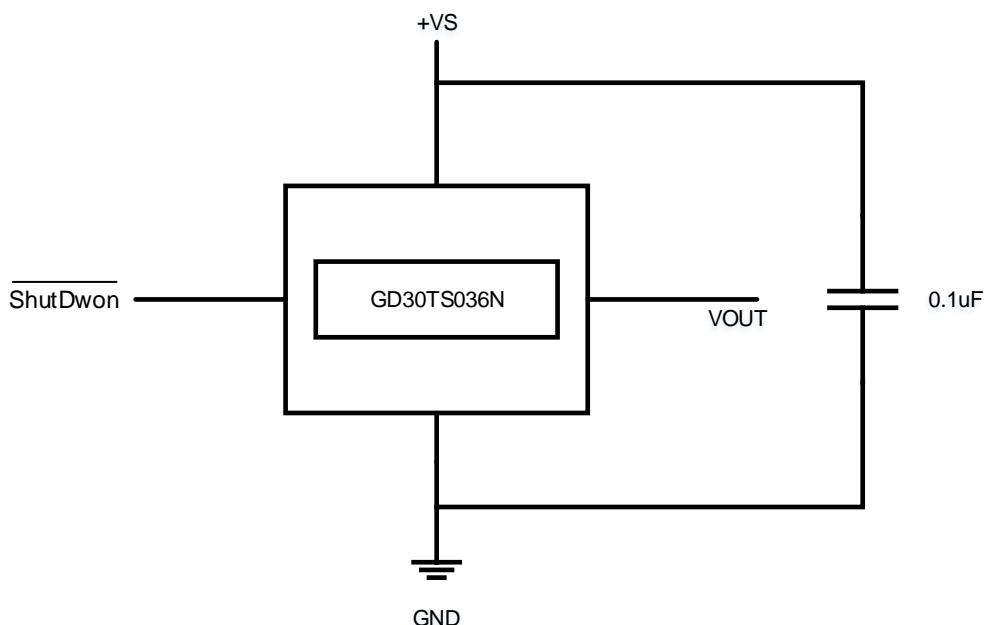
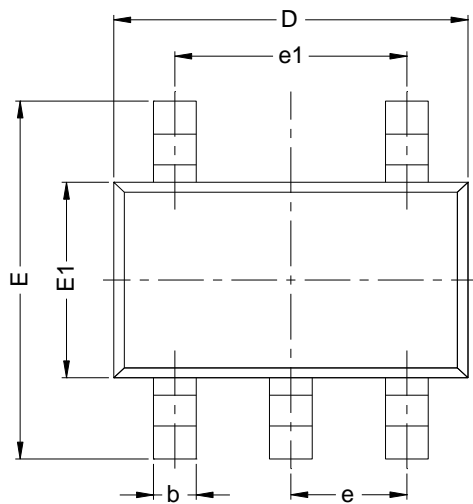


Figure 3. Basic Temperature Sensor Connections

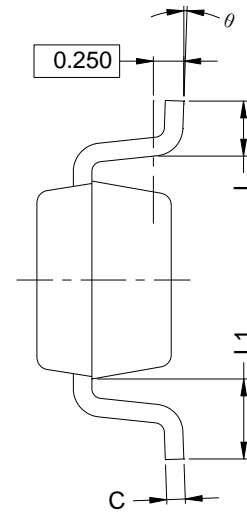
7 Package Information

7.1 Outline Dimensions

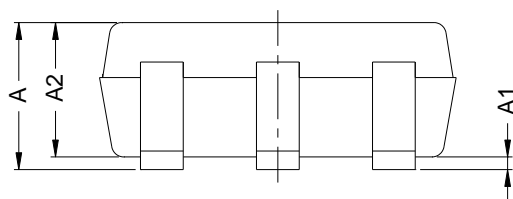
SOT23-5 Package Outline



TOP VIEW



SIDE VIEW



FRONT VIEW

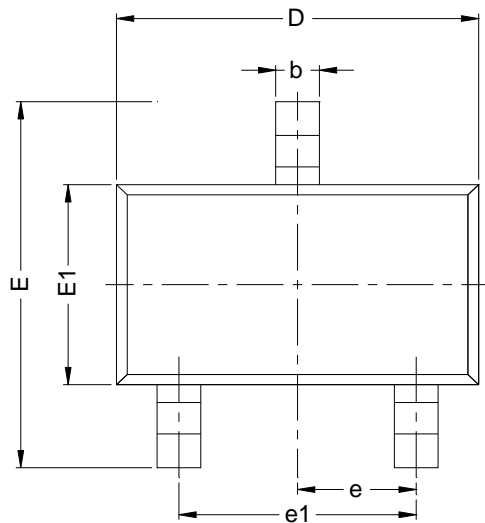
NOTES:

1. All dimensions are in millimeters.
2. Package dimensions does not include mold flash, protrusions, or gate burrs.
3. Refer to the [Table 2. SOT23-5 dimensions\(mm\)](#).

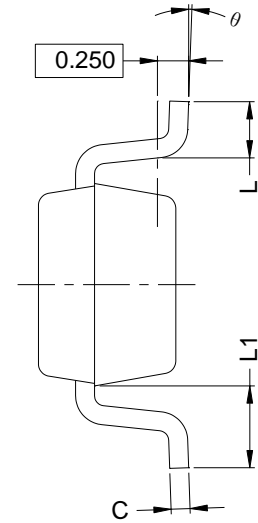
Table 2. SOT23-5 dimensions(mm)

SYMBOL	MIN	NOM	MAX
A	1.05	1.15	1.25
A1	0.00	0.05	0.10
A2	1.05	1.10	1.15
b	0.30	0.40	0.50
c	0.10	0.15	0.20
D	2.82	2.92	3.02
E1	1.50	1.60	1.70
E	2.65	2.80	2.95
e	0.950(BSC)		
e1	1.80	1.90	2.00
L	0.30	0.45	0.60
L1	0.60REF		
θ	0°		8°

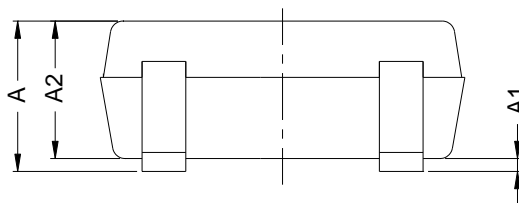
SOT23-3 Package Outline



TOP VIEW



SIDE VIEW



FRONT VIEW

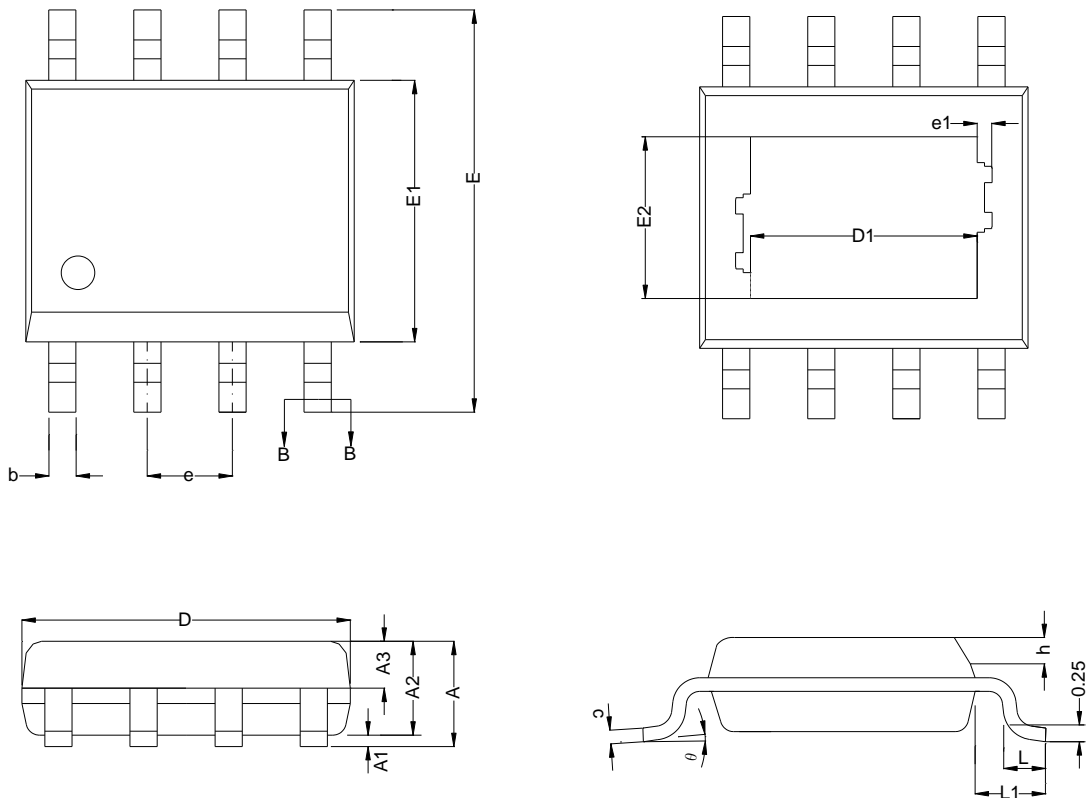
NOTES:

1. All dimensions are in millimeters.
2. Package dimensions does not include mold flash, protrusions, or gate burrs.
3. Refer to the [Table 3. SOT23-3 dimensions\(mm\)](#)Table 3. SOT23-3 dimensions(mm).

Table 3. SOT23-3 dimensions(mm)

SYMBOL	MIN	NOM	MAX
A	0.91		1.12
A1	0.01		0.10
A2	0.90		1.02
b	0.30		0.50
c	0.09		0.15
D	2.80		3.00
E	2.25		2.55
E1	1.20		1.40
e	0.950(TYP)		
e1	1.80		2.00
L1	0.30		0.50
L	0.55REF		
θ	0°		8°

SOIC-8 Package Outline



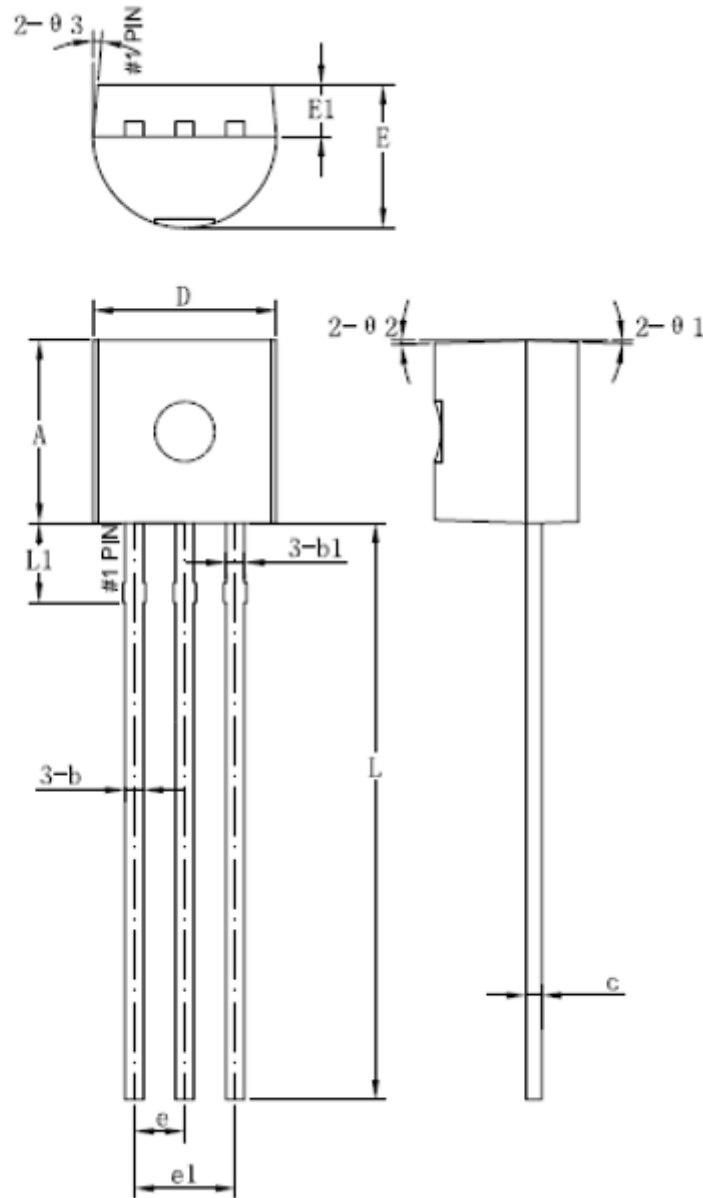
NOTES:

4. All dimensions are in millimeters.
5. Package dimensions does not include mold flash, protrusions, or gate burrs.
6. Refer to the [Table 4. SOIC-8 dimensions\(mm\)](#).

Table 4. SOIC-8 dimensions(mm)

SYMBOL	MIN	NOM	MAX
A			1.75
A1	0.10		0.225
A2	1.30	1.40	1.50
A3	0.60	0.65	0.75
b	0.39		0.48
c	0.21		0.26
D	4.79	4.90	5.10
E	5.80	6.00	6.20
E1	3.70	3.90	4.10
e	1.27BSC		
h	0.25		0.50
L	0.50		0.80
L1	1.05BSC		
θ	0°		8°

TO-92 Package Outline



NOTES:

7. All dimensions are in millimeters.
8. Package dimensions does not include mold flash, protrusions, or gate burrs.
9. Refer to the [Table 5. TO-92 dimensions\(mm\)](#)

Table 5. TO-92 dimensions(mm)

SYMBOL	MIN	NOM	MAX
A	4.5	4.6	4.7
b	0.38	0.46	0.56
b1		0.46	
c	0.36	0.38	0.51
D	4.5	4.6	4.7
E	3.45	3.6	3.75
E1	1.2	1.3	1.4
e		1.27	
e1		2.54	
L	13.5	14.5	15.3
L1		1.96	
θ 1		2°	
θ 2		2°	
θ 3		5°	

8 Ordering Information

Ordering Code	Package Type	ECO Plan	Packing Type	MOQ	OP Temp(°C)
GD30TS036NNSTR-I	SOT23-5	Green	Tape & Reel	3000	-40°C to +125°C
GD30TS036NBSTR-I	SOT23-3	Green	Tape & Reel	3000	-40°C to +125°C
GD30TS036NWGTR-I	SOIC-8	Green	Tape & Reel	4000	-40°C to +125°C
GD30TS036NB9BU-I	TO-92	Green	Bulk	2000	-40°C to +125°C

9 Revision History

REVISION NUMBER	DESCRIPTION	DATE
1.0	Initial release and device details	2024

Important Notice

This document is the property of GigaDevice Semiconductor Inc. and its subsidiaries (the "Company"). This document, including any product of the Company described in this document (the "Product"), is owned by the Company according to the laws of the People's Republic of China and other applicable laws. The Company reserves all rights under such laws and no Intellectual Property Rights are transferred (either wholly or partially) or licensed by the Company (either expressly or impliedly) herein. The names and brands of third party referred thereto (if any) are the property of their respective owner and referred to for identification purposes only.

The Company makes no representations or warranties of any kind, express or implied, with regard to the merchantability and the fitness for a particular purpose of the Product, nor does the Company assume any liability arising out of the application or use of any Product described in this document. Any information provided in this document is provided only for reference purposes. It is the sole responsibility of the user of this document to determine whether the Product is suitable and fit for its applications and products planned, and properly design, program, and test the functionality and safety of its applications and products planned using the Product. Unless otherwise expressly specified in the datasheet of the Product, the Product is designed, developed, and/or manufactured for ordinary business, industrial, personal, and/or household applications only, and the Product is not designed or intended for use in (i) safety critical applications such as weapons systems, nuclear facilities, atomic energy controller, combustion controller, aeronautic or aerospace applications, traffic signal instruments, pollution control or hazardous substance management; (ii) life-support systems, other medical equipment or systems (including life support equipment and surgical implants); (iii) automotive applications or environments, including but not limited to applications for active and passive safety of automobiles (regardless of front market or aftermarket), for example, EPS, braking, ADAS (camera/fusion), EMS, TCU, BMS, BSG, TPMS, Airbag, Suspension, DMS, ICMS, Domain, ESC, DCDC, e-clutch, advanced-lighting, etc.. Automobile herein means a vehicle propelled by a self-contained motor, engine or the like, such as, without limitation, cars, trucks, motorcycles, electric cars, and other transportation devices; and/or (iv) other uses where the failure of the device or the Product can reasonably be expected to result in personal injury, death, or severe property or environmental damage (collectively "Unintended Uses"). Customers shall take any and all actions to ensure the Product meets the applicable laws and regulations. The Company is not liable for, in whole or in part, and customers shall hereby release the Company as well as its suppliers and/or distributors from, any claim, damage, or other liability arising from or related to all Unintended Uses of the Product. Customers shall indemnify and hold the Company, and its officers, employees, subsidiaries, affiliates as well as its suppliers and/or distributors harmless from and against all claims, costs, damages, and other liabilities, including claims for personal injury or death, arising from or related to any Unintended Uses of the Product.

Information in this document is provided solely in connection with the Product. The Company reserves the right to make changes, corrections, modifications or improvements to this document and the Product described herein at any time without notice. The Company shall have no responsibility whatsoever for conflicts or incompatibilities arising from future changes to them. Information in this document supersedes and replaces information previously supplied in any prior versions of this document.

© 2024 GigaDevice – All rights reserved